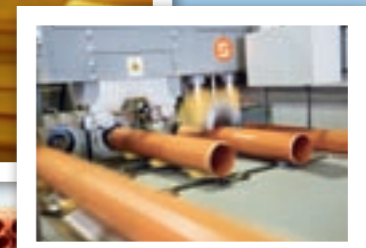


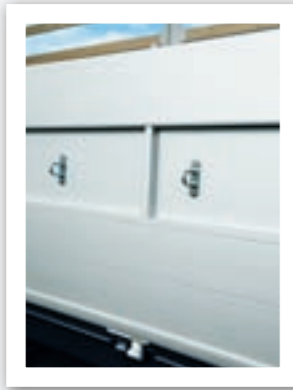
EXPERIENCE IS THE MOTHER OF INVENTION.
THE LOAD CARRIERS.



INNOVATIVE FROM EXPERIENCE. KRONE FLATBED AND CURTAIN VEHICLES HAVE BEEN STANDING FOR PRACTICAL TRANSPORT COMPETENCE FOR MORE THAN 30 YEARS. THE VEHICLES FEATURE A SOLID DESIGN, SIMPLE HANDLING, AND CONVINCING RELIABILITY ON THE ROAD.

Since its foundation in 1971, KRONE has built flatbed and curtain vehicles and has developed numerous classics for everyday transports. Thus KRONE invented the curtain frame with „one-hand operation“, which can be completely dismantled by the driver en route without any assistance.

And uses only extensively tested components which are produced in large series. Thus the KRONE Load Carriers today still are anticipatory as well as operationally safe investments due to their functional handling, their tried and tested components, and their first-class manufacture.



Solid side board walls.
The board walls are equipped with tie rods and are firmly screwed to the hinge rack.



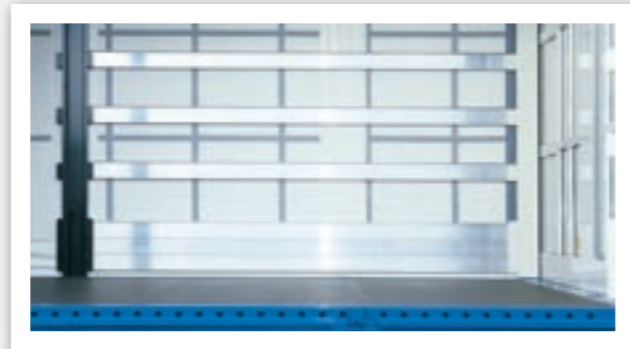
Functional side collision protection.
The side collision protection is foldable, so that accessories, as the spare wheel basket and the tool boxes, are easily accessible.



Protected curtain tensioner.
The curtain tensioner of the sliding curtain is impact-protected in the rear gantry and thus is nearly indestructible.



Lowered coupling.
Upon request, KRONE equips your motor vehicle with a lowered coupling and a foldable underrun protection.



Reinforced load compartment limitation.
For a stronger lateral load compartment limitation it is recommended to equip the vehicle with aluminium V plug-in laths or with additional wooden plug-in laths.



First-class sliding roof.
For using a crane directly at the front wall, the sliding roof can also be opened from the front to the rear.



Sturdy front wall.
The inside of the front wall is equipped with a double collision protection through a chassis which is pulled up at the front and through the plywood rebound plate, which is screwed to the front wall.

Solid Multi Lock frame.
The Load Carrier with board wall is also equipped with the Multi Lock external frame. A collision protection avoids damage to the board wall.



Safe board wall equipment.
Board wall latches are equipped with an adjustable eccentric. The fold-down post is equipped with a double protection, the board wall with a tie rod.



Robust rear.
The rear post is secured through ram corners, the door leaves are turned out of the ramp area by means of double hinges.



Central axle trailer.
In high-volume execution with 3 pairs of side board walls.



2-axle flatbed semitrailer.
Without roof frame in classical "building material execution".



2-axle flatbed semitrailer.
In sliding curtain execution.



Flatbed superstructure on 3-axle motor vehicle.
In sliding curtain execution with lowered coupling for central axle trailers.