

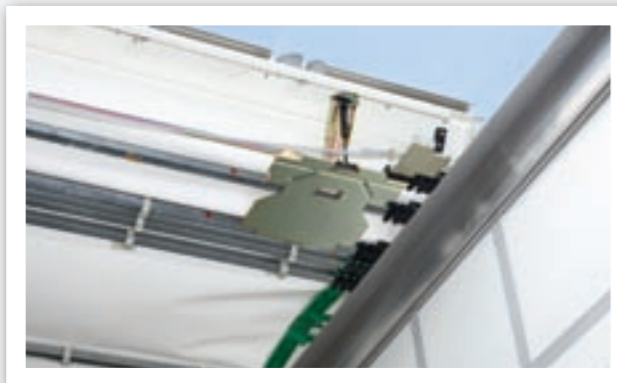
FOR PROPER PLANNING AND RIGHT CURTAINS. THE SWAP CURTAIN BOXES.



WHEN PLANNING IS CONCERNED, FLEXIBILITY IS NEEDED. IN THE FIELD OF CURTAIN BOXES, KRONE DOES NOT LEAVE ANYTHING TO BE DESIRED. WHETHER WITH SOLID ROOF, HAMBURG ROOF OR CURTAIN SLIDING ROOF, WITH BOARD WALLS, WITH CURTAINSIDER OR BOARD WALL CURTAINSIDER, WHETHER 7.15, 7.45, 7.82, OR 13.6 M LENGTH AND PARKING LEVELS OF 1,000 TO 1,320 MM: THERE IS THE RIGHT CURTAIN BOX AVAILABLE FOR ANY APPLICATION.

Naturally in the proven KRONE quality: certified acc. to EN 283/284, with long-term protection for the steel components, and with reasonable detail solutions. For example as

steel coffer with side curtain equipment. Or as steel coffer with curtainsider equipment for system traffic.



Simple sliding roof operation.

The sliding roof features a pneumatic spring-supported end beam for a simple operation from the ground. Sliding roof and curtain fabrication are tested acc. to EN 283 for combined traffic.



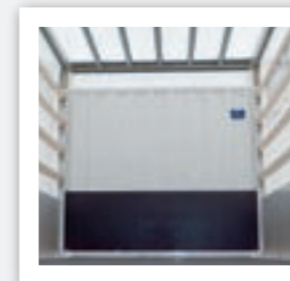
Extra-long swap flatbeds.

When more length is required: the 13.6 m long swap flatbed with sliding curtain equipment. Transported on a Box Liner eLTU 5 Plus.



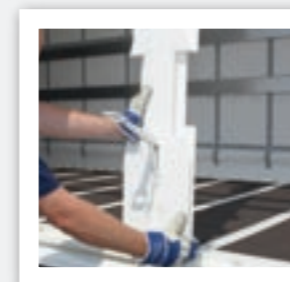
Professional swap flatbed.

The Profi Box is the standard swap flatbed with side board walls and a small double-wing door at the rear.



Extensive series equipment.

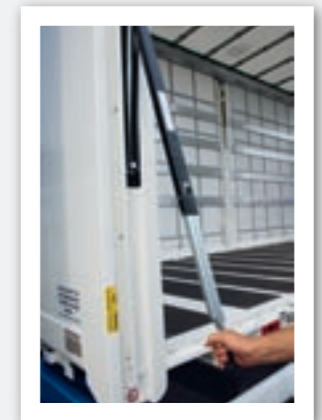
Hamburg roof frame, side board walls, wooden plug-in laths, and the protected front wall are standard equipment of the Profi Box.



Handy shift post.

The simple handling of the shift post via one-hand operation facilitates loading and unloading. (Other post executions are available as options.)

*New generation!
Up to 350 kg
lighter!*



Mega equipment.

The Mega curtain box is equipped with a simple-to-operate hand lever rising roof. Optionally, also available with hydraulic rising roof.



Tight curtain tension.

The toothed wheel/lever gear for horizontal curtain strapping at the rear is fitted in a protected position and provides sufficient leverage for a tight curtain tension.



Highest stability.

Solid crane pockets withstand even very high amounts of swap cycles.