

HANDLES EVERY ROLL SAFELY.
THE COIL LINER.



OFTEN COPIED, BUT NEVER EQUALLED: BACK IN 1973, WE REVOLUTIONIZED COIL TRANSPORTATION. IT WAS THEN THAT KRONE ENGINEERS DEVELOPED A SPECIAL TROUGH WHICH EVER SINCE HAS GUARANTEED THE SAFE TRANSPORT OF STEEL ROLLS.

**Committed to safety.
The solid equipment.**

But, of course, we did not stop at this innovation. Since then, we have again and again found new, solid answers where safe coil transportation is concerned. The Coil Liner chassis is particularly reinforced; therefore, the trailer can optimally withstand even extreme load points. Apart from that, it is also designed to withstand a lot, with the durable KTL plus powder painting and sturdy series components. Really a vehicle for professional coil transports: stable, clever, reliable.

**A steely professional for practical use.
The functional equipment.**

Practical details are important criteria, for they facilitate work, save time, and reduce cost. Therefore, the Coil Liner is available with a coil trough of 7.23 m or 8.84 m length. Its solid chassis has numerous braces, if the load is put down roughly. Ten pairs of external heavy-duty strapping rings and plug-in posts ensure absolutely safe load securing. And due to the Multi Lock external frame with numerous strapping points and forklift-compatible coil trough covers it is also possible to transport any load whatsoever. The Coil Liner is certified independent of the type of load.

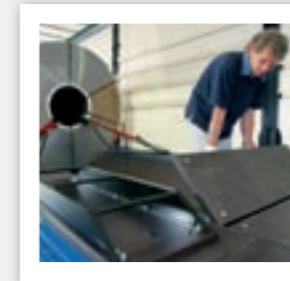
COIL LINER. PRODUCT FEATURES.



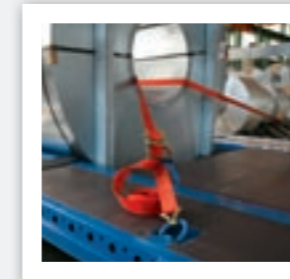
Practical details.
Practical details are decisive criteria, for they facilitate work, save time, and reduce cost. Therefore, the Coil Liner is available with a 7.23 or 8.84 m long coil trough.



Safe coil trough.
Simple but ingenious: The KRONE trough in the Coil Liner floor blocks uncontrolled movements of the steel roll.



Sturdy trough cover.
The cover of the coil trough can be easily handled and is so solid that it is even forklift-compatible (fork lift axle load up to 5,460 kg).



Optimum strapping angles.
The Multi Lock external frame allows safe down, direct, and inclined strapping of coils in any direction.



Extra strapping rings.
Ten pairs of heavy-duty strapping rings, with a strapping load of 5,000 kg, complement the manifold strapping points of the Multi Lock external frame. The strapping troughs are equipped with a cover.

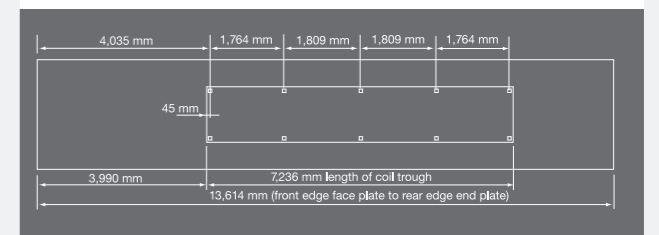


Solid plug-in posts.
Plug-in posts of the coil trough ensure form-fitting and proper load distribution. Two plug-in posts (80x80 mm) are standard equipment; additional posts are available as optional equipment.



The light Coil Liner Ultra.
With the new Coil Liner Ultra, Krone offers a weight-optimised semitrailer, which is approx. 300 kg lighter than the standard Coil Liner, its empty weight amounting to approx. 6,990 kg.

POSITION OF THE COIL TROUGH (7.2 m, standard equipment)



POSITION OF THE COIL TROUGH (8.8 m, optional equipment)

