

REFRESHING, YET MATURE.
THE FRESH LINER DUOPLEX STEEL.



FIRST-CLASS MANUFACTURING, EXCELLENT PRICE-PERFORMANCE RATIO. THE NEW KRONE FRESH LINER CONVINCES BY ITS IMPACT-RESISTANT SANDWICH PANELS, HIGH INSULATION CAPACITY AND OPTIMUM DURABILITY.

The fresh solution on the transport market.

The reason for this: the innovative Fresh Liner Duoplex Steel is based upon the isolating coffer know-how which resulted in the development of the new Cool Liner Duoplex Steel. Therefore, it is also produced in our Lübtheen plant. The result is a coffer which is particularly

suitable for fresh produce and which impresses by its ideal isolation, functionality, and sturdiness, inside and outside.

*6,900 kg
empty weight*



FRESH LINER DUOPLEX STEEL. PRODUCT FEATURES.



Fresh produce logistics with isolating coffer know-how. With the use of the 30 mm thick Duoplex Steel side wall panels, fresh produce logistics are entering a new dimension. Integrated doubledeck guide rails and strapping rails allow high transport efficiency and optimum load securing.



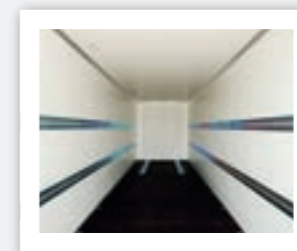
Simple doubledeck height adjustment. The doubledeck loading beams can be easily handled by means of the control bar. Markings at the guide rails facilitate height adjustment.



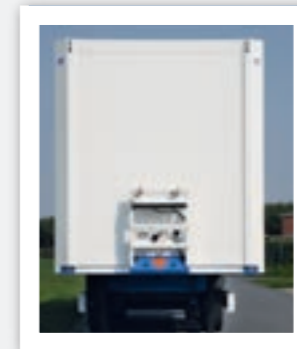
Innovative doubledeck guide rails. State-of-the-art manufacturing technology: doubledeck guide rails with split and continuous strapping rails, integrated flush in the side walls.



Optimum tightness. The steel rear door with foam block lining provides optimum closing with top tightness. Internal espagnolette (turn-bar) latches ensure a smooth outer surface.



Solid load compartment. The 300 mm high socket kick strip and the 30 mm thick perforated floor plates provide stability and high load capacity.



Perfected front wall. The front wall is aerodynamically shaped. The coupling supports provide light and air connections on two levels.